



Flygt 3060.390

Table of Contents

1 Introduction.....	2
1.1 Specially approved products.....	2
2 Product Description.....	3
2.1 Products included.....	3
2.2 The data plate.....	3
2.3 Product denomination.....	3
3 Exploded View.....	5
3.1 3060.390.....	5
3.2 Sump components.....	6
3.3 Cooling components.....	7
4 Spare Parts.....	8
4.1 3060.390.....	8

1 Introduction

Purpose of this manual

The purpose of this manual is to provide necessary information on spare parts and accessories order.

Disclaimer

Always use genuine Flygt parts. The use of other spare parts or accessories can invalidate any claims for warranty or compensation. Xylem does not take any responsibility for damages that are caused by the use of non-original parts. For more information, contact your local sales and service representative.

Data for ordering spare parts

The following information is needed for spare part orders:

- Serial number of the product
- Part number
- Quantity of bulk material, see * in tables

1.1 Specially approved products

Qualification of personnel

Only Xylem or Xylem-authorized service personnel may undertake repair work on specially approved products.

Dimensional accuracy inspection

Spare parts marked with (Ex) after the part number are subject to dimensional accuracy inspection when used in specially approved products.

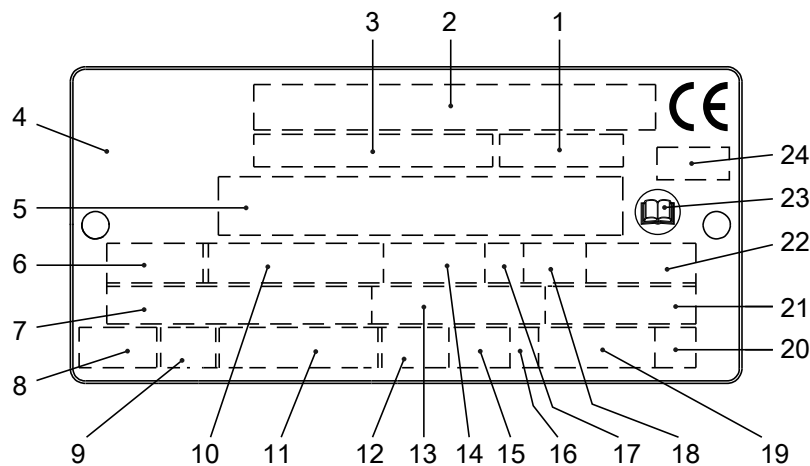
2 Product Description

2.1 Products included

Pump model	Standard	EX	MSHA	Drainage	Sludge
3060.390	X			X	

2.2 The data plate

The data plate is a metal label that is located on the main body of the products. The data plate lists key product specifications. Specially approved products also have an approval plate.



1. Curve code or Propeller code
2. Serial number
3. Product number
4. Country of origin
5. Additional information
6. Phase; type of current; frequency
7. Rated voltage
8. Thermal protection
9. Thermal class
10. Rated shaft power
11. International standard
12. Degree of protection
13. Rated current
14. Rated speed
15. Maximum submergence
16. Direction of rotation: L=left, R=right
17. Duty class
18. Duty factor
19. Product weight
20. Locked rotor code letter
21. Power factor
22. Maximum ambient temperature
23. Read installation manual
24. Notified body, only for EN-approved Ex products

Figure 1: The data plate

2.3 Product denomination

Reading instruction

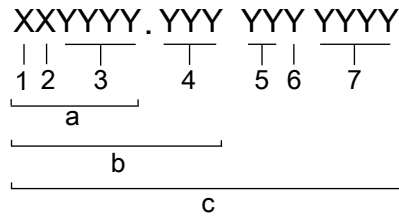
In this section, code characters are illustrated accordingly:

X = letter

Y = digit

The different types of codes are marked up with a, b and c. Code parameters are marked up with numbers.

Codes and parameters

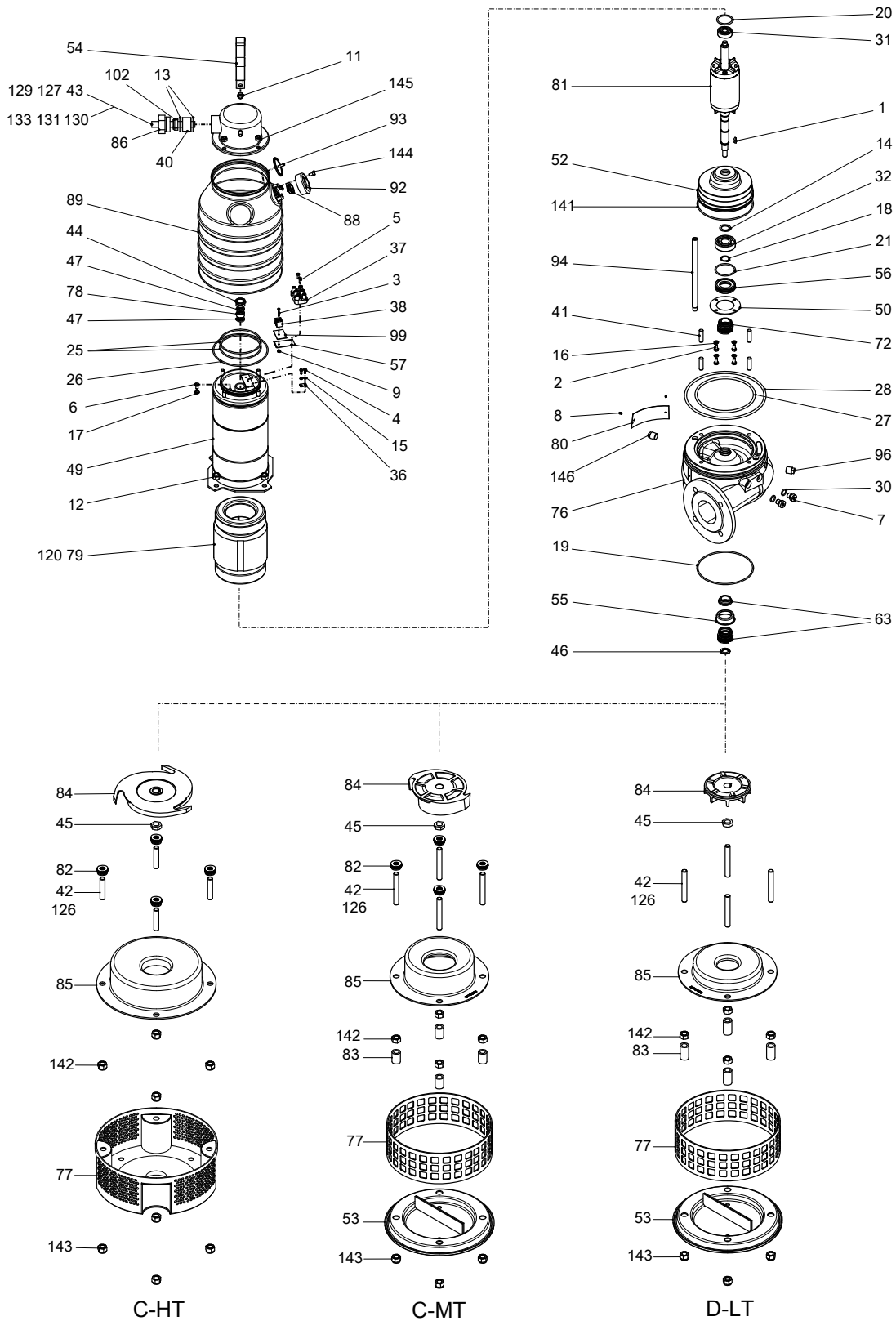


WS006265B

Type of Callout	Number	Indication
Type of code	a	Sales denomination
	b	Product code
	c	Serial number
Parameter	1	Hydraulic end
	2	Type of installation
	3	Sales code
	4	Version
	5	Production year
	6	Production cycle
	7	Running number

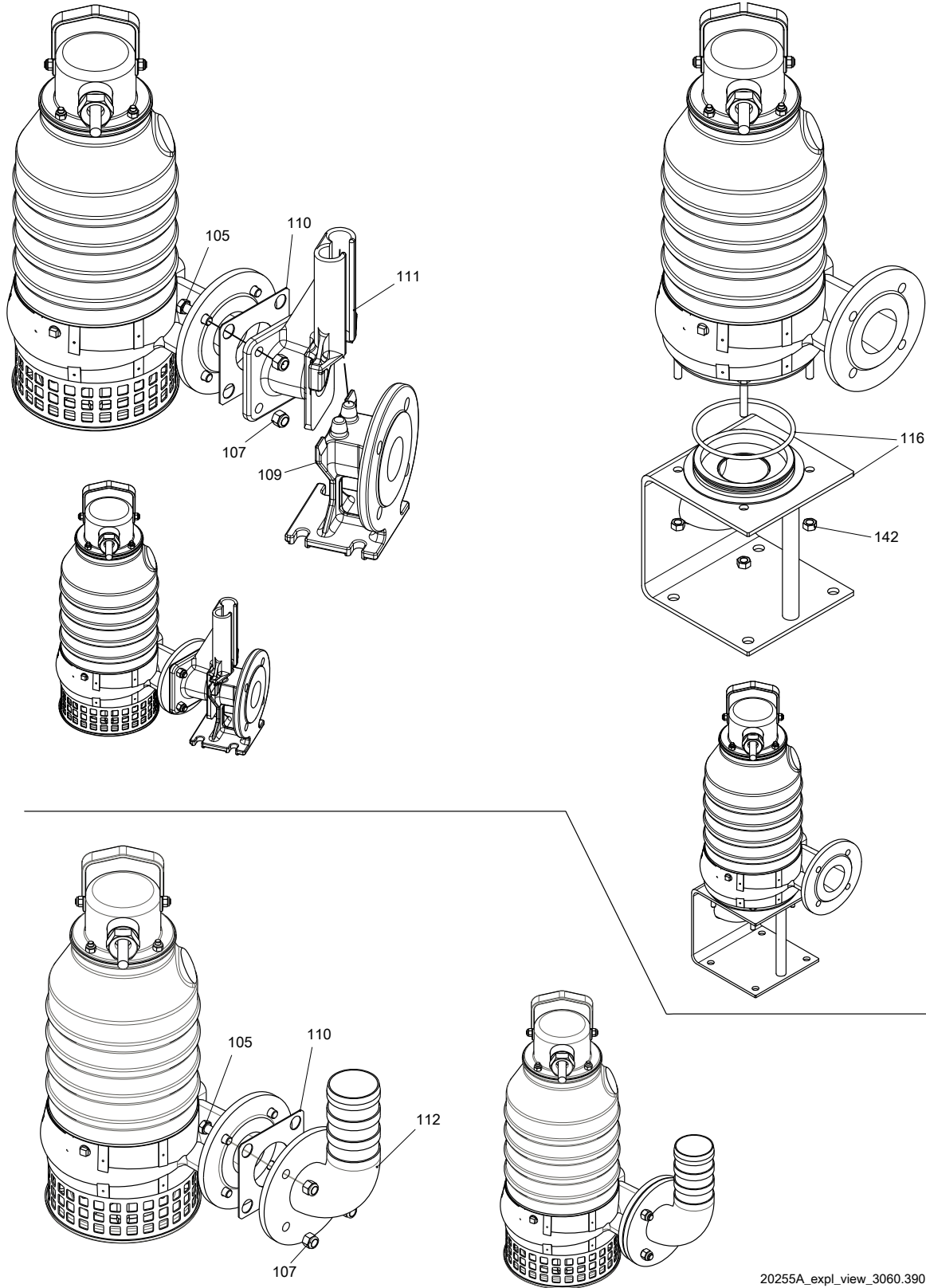
3 Exploded View

3.1 3060.390



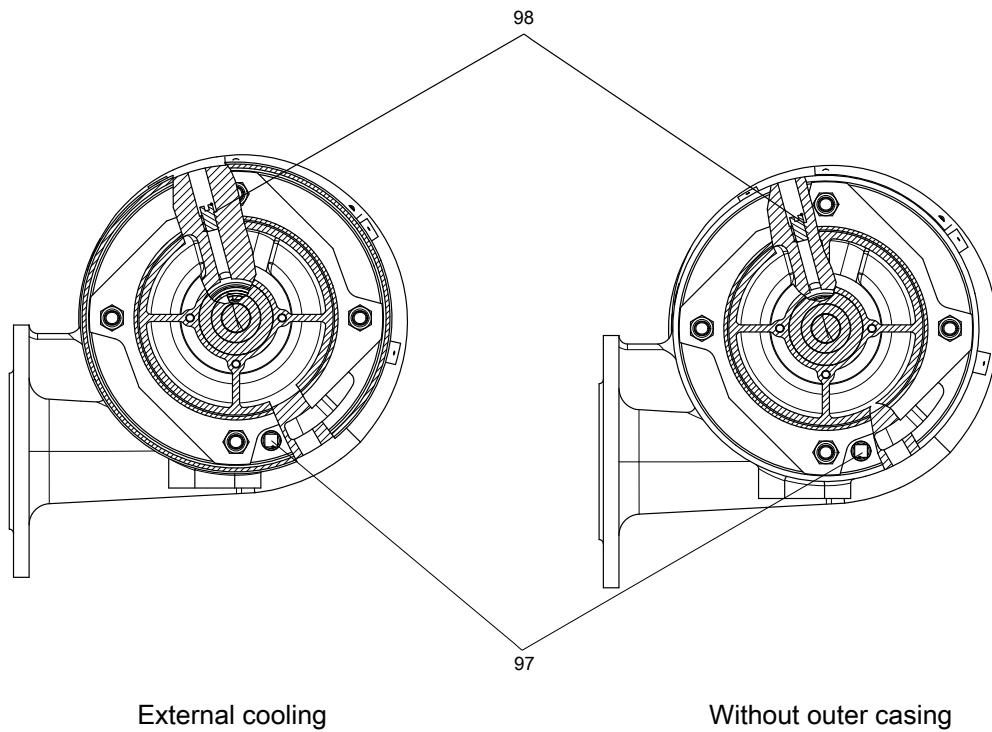
20254A_expl_view_3060.390

3.2 Sump components



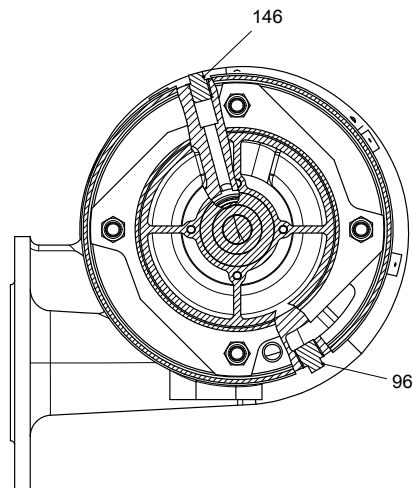
20255A_expl_view_3060.390

3.3 Cooling components



External cooling

Without outer casing



Internal cooling

20256A_expl_view_3060.390

4 Spare Parts

4.1 3060.390

Pos. No	Part. No	Denomination	Qty/Version	
			390	
1	80 80 13	Woodruff key 4X16-A4	1	
2	81 48 24	Hexagon head screw M6X12-A4-70	4	
3	81 73 32	Slotted head screw MCS 3X20-A4-70	1	
4	81 73 41	Slotted head screw M4X10-A4-70	2	
5	81 73 42	Slotted head screw M4X12-A4-70	2	
6	81 73 73	Slotted head screw M6X12-A4-70	1	
7	303 44 08	Plug	2	
8	82 21 73	Drive screw 4X5-A4	6	
9	82 23 51	Hexagon nut M3-A4-70	1	
11	82 27 27	Lock nut M8-A4-70	2	
12	82 27 28	Lock nut M10-A4-70	4	
13	82 42 37	Plain washer 14.5X35X2-A4-70	(12)-14mm	2
13	82 42 38	Plain washer 16.5X35X2-A4-70	(14)-16mm	2
13	82 42 39	Plain washer (16)-18 MM		2
13	82 42 40	Plain washer (18)-22 MM		2
13	82 42 41	Plain washer (20)-22 MM		2
13	82 42 36	Plain washer 12.5X35X2-A4-70	(10)-12mm	2
14	82 44 06	Supporting washer 20X28X2		1
15	82 48 87	Spring washer DIN 127-B-4-A4		2
16	82 48 89	Spring washer DIN 127-B-6-A4		4
17	82 50 46	Sealing washer		1
18	82 58 92	Retaining ring SGA 20		1
19	82 72 91	O-ring 139.5X3 FPM	MT LT	1
19	82 72 99	O-ring 184.3X5.7 FPM	HT	1
20	82 81 00	O-ring 36.2X3.0 FPM		1
21	82 80 97	O-ring 44.2X3 FPM		1
25	82 75 14	O-ring 94.5X3.0 FPM		2
26	82 75 15	O-ring 134.5X3.0 FPM		1
27	82 75 16	O-ring 144.3X5.7 FPM		1
28	82 75 24	O-ring 194.3X5.7 FPM		1
30	82 79 12	O-ring 13.3X2.4 FPM		2
31	83 33 11	Ball bearing 12X37X12 MM		1
32	83 33 13	Ball bearing 20X52X15 MM		1
36	83 50 00	Earthing plate		1
37	83 50 75	Connection term boar		1
38	83 53 43	Terminal block		1
40	84 35 59	Seal sleeve (12)-14 MM		1
40	84 35 32	Seal sleeve (14)-16 MM		1

Pos. No	Part. No	Denomination	Qty/Version
			390
40	84 35 33	Seal sleeve (16)-18 MM	1
40	84 35 34	Seal sleeve (18)-20 MM	1
40	84 35 35	Seal sleeve (20)-22 MM	1
40	84 35 66	Seal sleeve (10)-12 MM	1
40	84 70 09	Seal sleeve (10)-12 MM	1
41	84 46 12	Stud M10X35-A4-70	4
42	84 46 21	Stud M10X75-A4-70	4
		MT	
		LT	
42	84 46 16	Stud M10X50-A4-70	4
		HT	
43	94 20 41	Motor cable subcab 4G1,5	*
		10,50 - 11,50mm	
43	94 20 42	Motor cable subcab 4G2,5	*
		12,50 - 13,50mm	
43	94 20 61	Motor cable subcab 4G1,5+2X1,5	*
		15 - 16mm	
43	94 20 59	Motor cable subcab 4G2,5+2X1,5	*
		17 - 18mm	
43	94 20 91	Motor cable hcr 7X2,5	*
		11 - 11,80mm	
43	94 21 04	Motor cable subcab 12 AWG/7	*
		20 - 22mm	
43	94 17 24	Motor cable SCREENED 6X2,5+2*1,5	*
		18,10 - 19,90mm	
43	94 19 90	Motor cable subcab S3X2,5+3X2,5/3+S(4X0,5)	*
		18 - 20mm	
44	220 25 01	Gland screw	1
45	249 84 01	Hexagon nut	2
46	250 24 02	Washer 15.5X24X0.25	2
46	250 24 03	Washer 15.5X24X0.5	2
46	442 17 00	Plain washer	1
47	253 21 00	Supporting washer 8 HOLES	2
47	505 37 00	Supporting washer 11 HOLES	2
49	371 41 00	Stator housing unit	1
50	376 72 00	Supporting washer	1
51	376 79 01	Cover	1
52	376 95 00	Bearing housing low.	1
53	376 98 00	Strainer bottom	1
54	441 52 00	Lifting handle compl	1
54	441 53 01	Clamp	1
55	384 12 00	Ring	1
56	387 26 00	Bearing cover	1
57	387 31 00	Bracket	1
63	720 45 07	Mechanical seal	1
72	720 45 15	Mechanical seal	1
76	377 13 00	Pump housing	1
		MT LT C D DN 65	
76	377 13 01	Pump housing	1
		MT LT C D DN 65 Drilled acc. to: EN 1092-2 tab. 7	
76	377 13 05	Pump housing	1
		MT LT C D DN 65 Drilled acc. to: ASME B 16.5-1996;tab.8	
76	426 38 00	Pump housing	1
		HT C DN 50	
77	377 15 00	Strainer	1
		MT	
77	434 68 00	Strainer compl.	1
		HT	

Pos. No	Part. No	Denomination	Qty/Version
			390
78	253 20 00	Stator conductor ent 8 HOLES	1
78	505 38 00	Stator conductor ent 11 HOLES	1
78	253 20 01	Stator conductor ent 6 HOLES	1
79	270 40 27	Stator 14-10-2a	3-phase 50 Hz 2-poles 190V-200V Y 3-phase 60 Hz 2-poles 200V-220V Y 1
79	270 40 34	Stator 14-10-2a	3-phase 50 Hz 2-poles 380V-400V Y 220V-230V D 3-phase 60 Hz 2-poles 440V-460V Y 260V D 1
79	270 40 43	Stator 14-10-2a	3-phase 50 Hz 2-poles 400V-440V Y 1
79	270 40 49	Stator 14-10-2a	3-phase 50 Hz 2-poles 500V Y 3-phase 60 Hz 2-poles 550V-575V Y 1
79	270 40 32	Stator 14-10-2a	3-phase 50 Hz 2-poles 346V-350V Y 200V-208V D 3-phase 60 Hz 2-poles 400V Y 230V-240V D 1
79	270 40 37	Stator 14-10-2a	3-phase 50 Hz 2-poles 400V YSER 200V Y// 3-phase 60 Hz 2-poles 440V-460V YSER 220V-230V Y// 1
79	270 40 54	Stator 14-10-2a	3-phase 50 Hz 2-poles 550V Y 1
79	270 40 30	Stator 14-10-2a	3-phase 60 Hz 2-poles 660V Y 380V D 1
79	270 40 38	Stator 14-10-2a	3-phase 50 Hz 2-poles 660V-690V Y 380V-400V D 1
79	270 40 51	Stator 14-10-2a	3-phase 60 Hz 2-poles 575V-600V Y 1
79	410 47 72	Stator 14-10-2a	1-phase 60 Hz 2-poles 230V-240V 1
80	630 68 00	Data plate USE 6306801 AS SPARE PART	1
81	376 93 00	Shaft unit	1
82	82 35 76	Plain washer 10-A4-170HV	16
82	250 23 03	Adjustment washer	MT HT 36
82	250 23 05	Adjustment washer	MT HT 20
82	250 23 05	Adjustment washer	MT HT 8
82	250 23 05	Adjustment washer	MT HT 12
83	342 83 03	Sleeve	4
83	342 83 02	Sleeve	4
84	376 99 00	Impeller	MT 50Hz 3-phase Material Stainless steel (ASTM 329) Curve code: 221 1
84	376 99 01	Impeller	MT 50Hz 60Hz 3-phase Material Stainless steel (ASTM 329) Curve code: 222 1

Pos. No	Part. No	Denomination	Qty/Version
			390
84	376 99 02	Impeller	1
		MT 50Hz 60Hz 3-phase Material Stainless steel (ASTM 329) Curve code: 226	
		MT 60Hz 1-phase Material Stainless steel (ASTM 329) Curve code: 226	
84	426 41 00	Impeller	1
		HT 50Hz 3-phase Material Stainless steel (ASTM 329) Curve code: 250	
84	426 41 01	Impeller	1
		HT 50Hz 60Hz 3-phase Material Stainless steel (ASTM 329) Curve code: 252	
84	377 25 00	Impeller	1
		LT 50Hz 3-phase Material stainless steel (ASTM 316L) Curve code: 272	
84	377 25 01	Impeller	1
		LT 50Hz 60Hz 3-phase Material stainless steel (ASTM 316L) Curve code: 274	
84	377 25 02	Impeller	1
		LT 50Hz 60Hz 3-phase Material stainless steel (ASTM 316L) Curve code: 276	
		LT 60Hz 1-phase Material stainless steel (ASTM 316L) Curve code: 276	
85	377 23 00	Suction cover	1
		MT	
85	426 42 00	Suction cover	1
		HT	
85	377 24 00	Suction cover	1
		LT	
86	511 07 00	Gland screw	1
88	312 62 01	Compression spring	1
89	377 14 00	Jacket	1
		Cooling jacket	
89	441 51 00	Jacket compl.	1
		Cooling jacket Air valve	
92	382 97 00	Cover	1
93	382 98 01	Valve	1
94	377 16 00	Pipe	1
96	83 07 37	Plug	1
		Internal cooling	
97	83 07 36	Plug	1
		External cooling	
		Without outer casing	
98	382 88 00	Plug	1
		External cooling	
		Without outer casing	
99	393 04 00	Insulating plate	1
102	510 97 00	Cable clamp	1
105	81 49 09	Hexagon head screw M12X45-A4-70	4
105	81 49 32	Hexagon head screw M16X45-A4-70	4
107	82 27 29	Lock nut M12-A4-70	4
107	82 27 30	Lock nut M16-A4-70	4
109	463 65 01	Discharge connection	1
110	392 27 00	Gasket	1
111	463 64 00	Sliding bracket	1
		Discharge connection DN 80 Drilled according to : EN 1092-2 tab. 7 ASME B 16.5-1996	

Pos. No	Part. No	Denomination	Qty/Version
			390
111	463 64 01	Sliding bracket	1
		Discharge connection DN 80 Drilled according to : EN 1092-2 tab. 7 ASME B 16.5-1996	
		Installation P DN 65 Drilled according to : EN 1092-2 tab. 7	
111	463 64 05	Sliding bracket	1
		Discharge connection DN 80 Drilled according to : EN 1092-2 tab. 7 ASME B 16.5-1996	
112	714 74 50	Discharge connection	1
116	314 92 00	Suction connection	1
		Installation T DN 65	
116	314 92 01	Suction connection	1
		Installation T DN 65 Drilled according to : EN 1092-2 tab. 7	
116	314 92 05	Suction connection	1
		Installation T DN 65 Drilled according to : ASME B 16.5-1996;tab.8	
120	94 05 86	Insulating hose D=12 MM	*
120	94 05 87	Insulating hose D=14 MM	*
126	90 32 51	Locking liquid	*
127	82 97 68	Cap 18X25 MM PVC	1
129	83 42 36	End sleeve 0.75 MM2; L=6 MM	2
130	83 42 62	Closed-end splice 0.33-0.82(AWG 22-18) L=18	2
131	83 43 60	Cable lug UL/CSA 0.50-1.65 MM2 M4	1
133	93 00 77	Shrink hose ID=6.4 MM	*
133	94 03 33	Shrink hose ID=3.2 MM	*
139	630 76 00	Plate HOT WATER PRODUCT	1
140	667 40 00	Sticker	2
141	82 75 15	O-ring 134.5X3.0 FPM	1
142	82 23 33	Hexagon nut M10-A4-70	4
143	82 23 33	Hexagon nut M10-A4-70	4
144	81 73 72	Slotted head screw M6X10-A4-70	3
145	82 23 32	Hexagon nut M8-A4-70	4
146	83 07 37	Plug	1
		Internal cooling	
800	733 43 00	O-ring kit	1
		FPM	
815	554 30 13	Starter	1
		351 3-phase 50/60 Hz 380V - 415 V Current range: 4 - 6,30 A Thermal contact supervision Phase sequence indicator Supply connection CEE 5-PLUG 32A Not CSA approved	
815	554 25 03	Starter	1
		BCD 4 3-phase 50/60 Hz 380V - 415 V Current range: 3,70 - 5,50 A Thermal contact supervision Phase sequence indicator Supply connection CEE 5-PLUG 16A Not CSA approved	
815	554 25 13	Starter	1
		BCD 4 3-phase 50/60 Hz 380V - 415 V Current range: 3,70 - 5,50 A Thermal contact supervision Phase sequence indicator Supply connection CEE 5-PLUG 32A Not CSA approved	

Pos. No	Part. No	Denomination	Qty/Version	
			390	
815	554 25 23	Starter	BCD 4 3-phase 50/60 Hz 380V - 415 V Current range: 3,70 - 5,50 A Thermal contact supervision Phase sequence indicator Supply connection CEE 4-PLUG 16A Not CSA approved	1
815	554 25 33	Starter	BCD 4 3-phase 50/60 Hz 380V - 415 V Current range: 3,70 - 5,50 A Thermal contact supervision Phase sequence indicator Supply connection CEE 4-PLUG 32A Not CSA approved	1
815	554 30 03	Starter	351 3-phase 50/60 Hz 380V - 415 V Current range: 4 - 6,30 A Thermal contact supervision Phase sequence indicator Supply connection CEE 5-PLUG 16A Not CSA approved	1
815	554 30 23	Starter	351 3-phase 50/60 Hz 380V - 415 V Current range: 4 - 6,30 A Thermal contact supervision Phase sequence indicator Supply connection CEE 4-PLUG 16A Not CSA approved	1
815	554 30 33	Starter	351 3-phase 50/60 Hz 380V - 415 V Current range: 4 - 6,30 A Thermal contact supervision Phase sequence indicator Supply connection CEE 4-PLUG 32A Not CSA approved	1
815	554 30 72	Starter	351 3-phase 50/60 Hz 500V Current range: 2,50 - 4 A Thermal contact supervision Phase sequence indicator Supply connection CEE 4-PLUG 32A Not CSA approved	1
900	601 89 37	Basic repair kit	CARBON - CERAMIC.CERAMIC - CERAMIC.	1



ООО «Бауманс Груп» - официальный партнер фирмы Flygt в России.

Тел: +7 495 121 49 50

Эл. почта: info@baumgroup.ru

Сайт: www.baumgroup.ru